

LG-T2727RGBA-TD-A

DATA SHEET

SPEC.NO. : SZ19081205
DATE : 2020/05/07
REV. : A/1

Approved By:

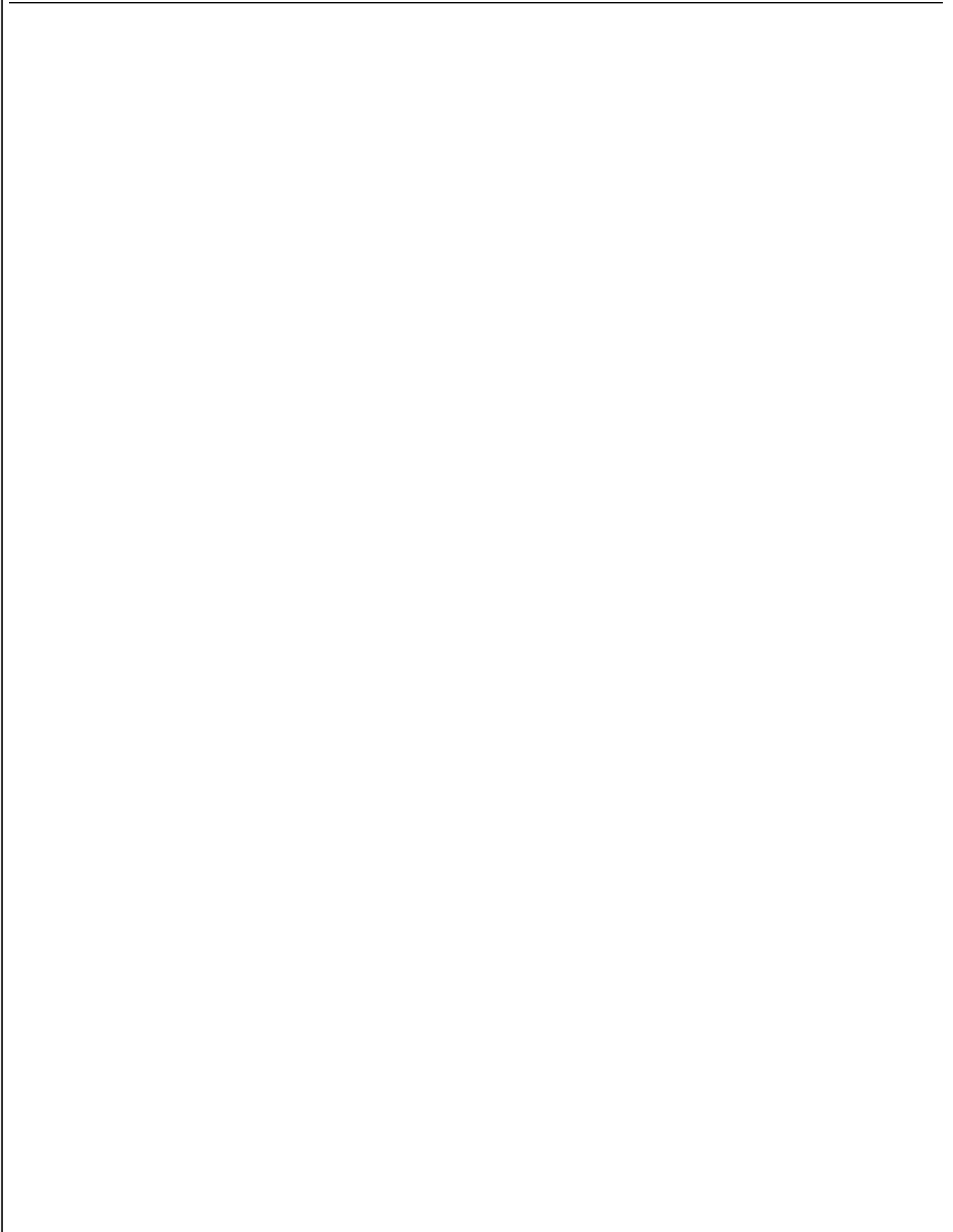
Checked By:

Prepared By:



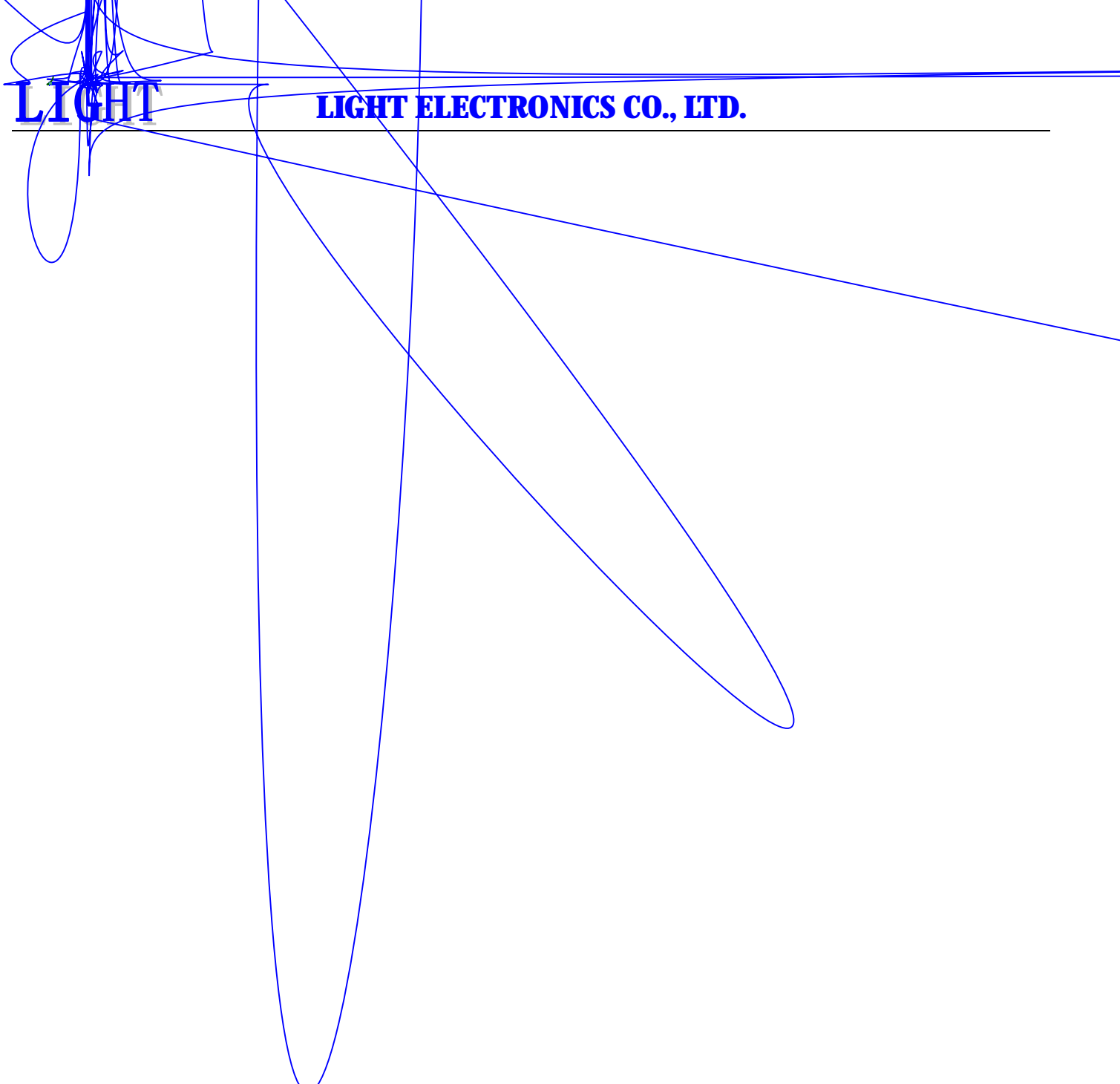
LG-T2727RGBA-TD-A

TOP Full-color LED

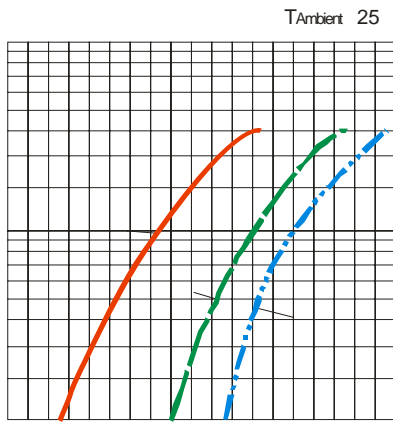


LIGHT

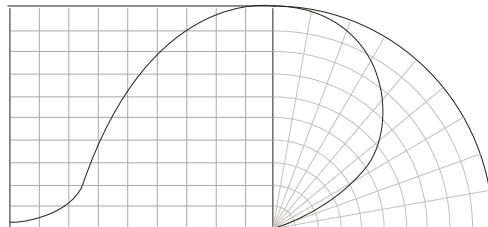
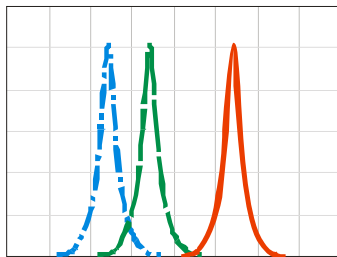
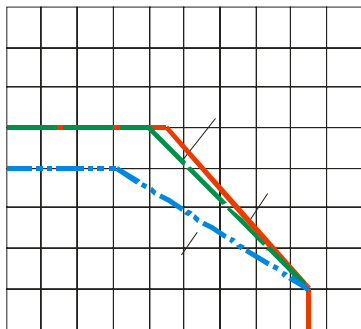
LIGHT ELECTRONICS CO., LTD.



Typical Characteristics Curves



$T_{Ambient} 25$



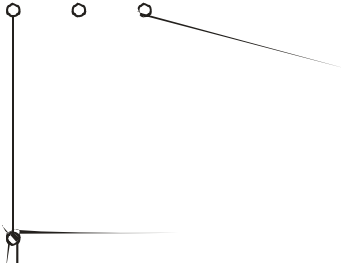
LIG

LIGHT ELECTRONICS CO., LTD.

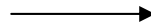
1

Packaging (1)

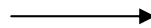
◇ Carrier Tape



◇ Details Of Carrier Tape



◇ Reel Dimension

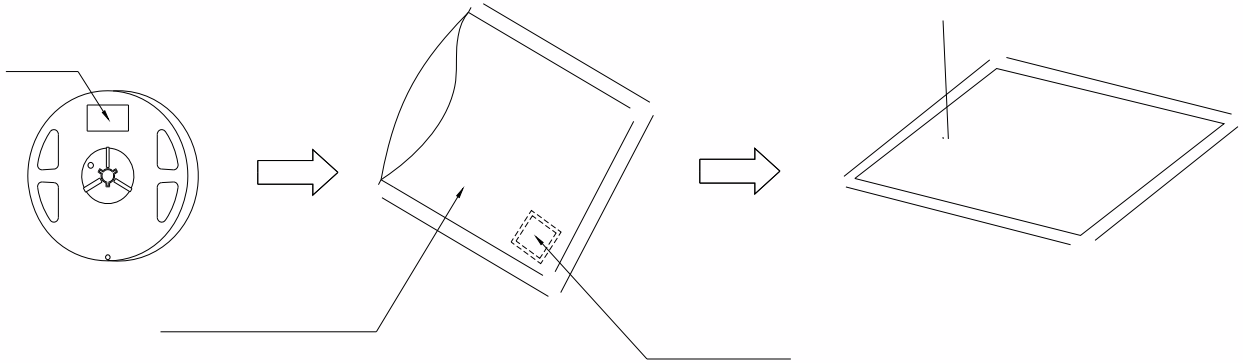


2

Packaging(2)



Moisture Proof and Anti-Electrostatic Foil Bag



Cardboard Box



Label Explanation

1

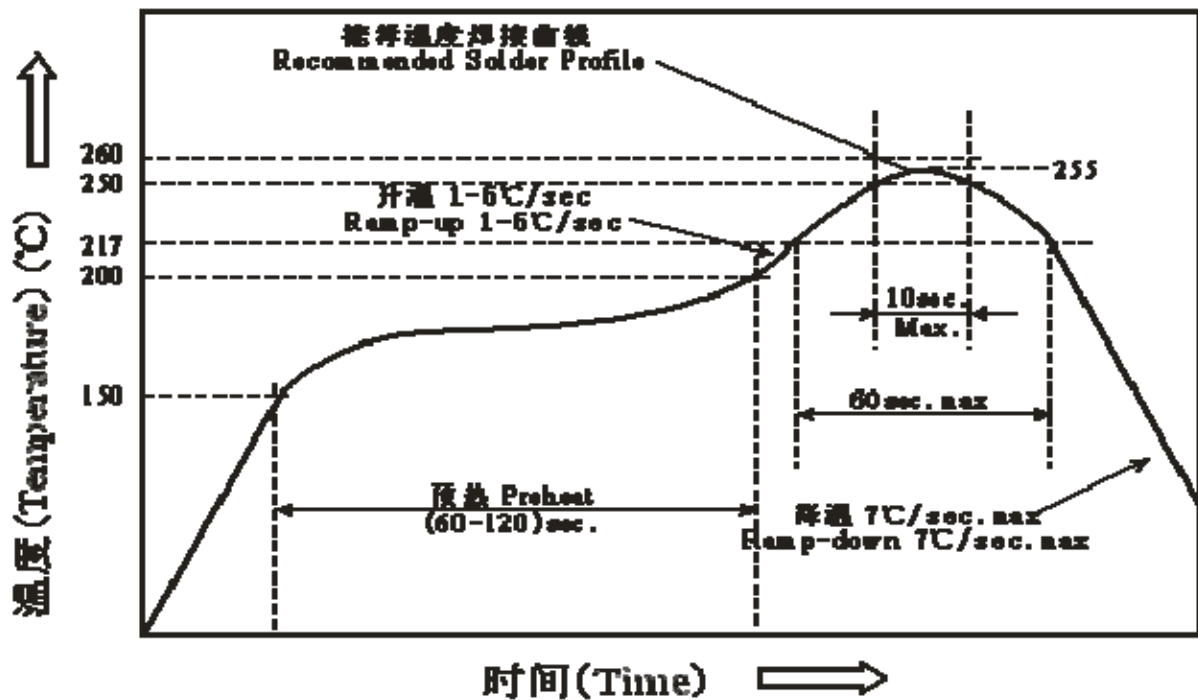
Guideline for Soldering (1)

1.

Hand Soldering

-
-
-
-

Reflow Soldering:



2

Guideline for Soldering (2)

(1)

Precautions (1)

1.

Storage

-
-
-
-
-

2.

Static Electricity

-
-
-

(2)

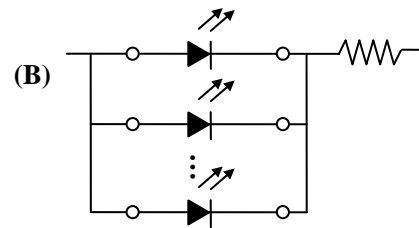
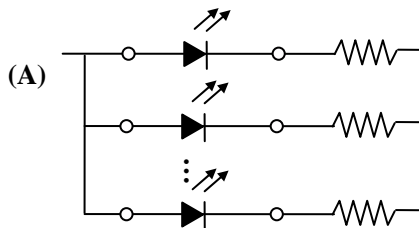
Precautions (2)

3.

Design Consideration

•

•



•

4.

Reverse voltage protection

•

•

(3)

Precautions (3)

5.

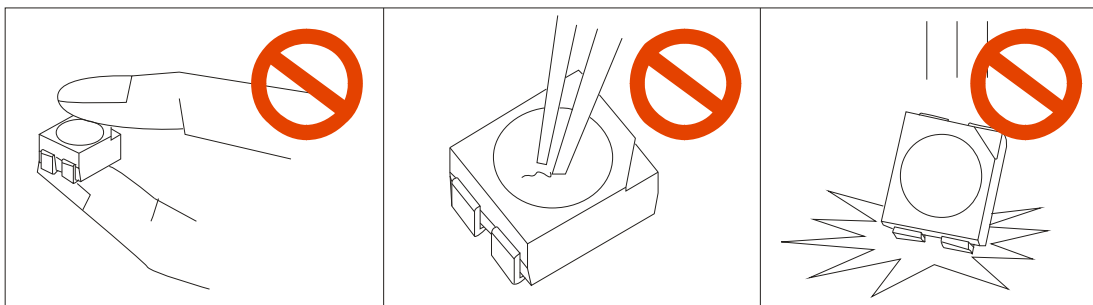
The safe temperature for LEDs working

-

6.

Others

-



-